



Thurrock Interim Local Transport Strategy

Connecting Thurrock – Vision 2050

VISION STATEMENT

Outline Draft Vision

Local Development Plan

Task Force

29 November 2021

Thurrock Transport Strategy – Refresh

Why are we doing it?

- Revised government housing delivery targets;
- Government transport and climate change policy reforms and changing priorities;
- Government planning reforms and changes to sources of government funding;
- The development of a new Local Plan for Thurrock to be adopted in 2023/24;
- The Highways Agency evolving plans and timescale for the implementation of the Lower Thames Crossing;
- A proposed new sub-regional transport body Transport East;
- The continuing effects effect of economic downturns in 2008 and 2020.

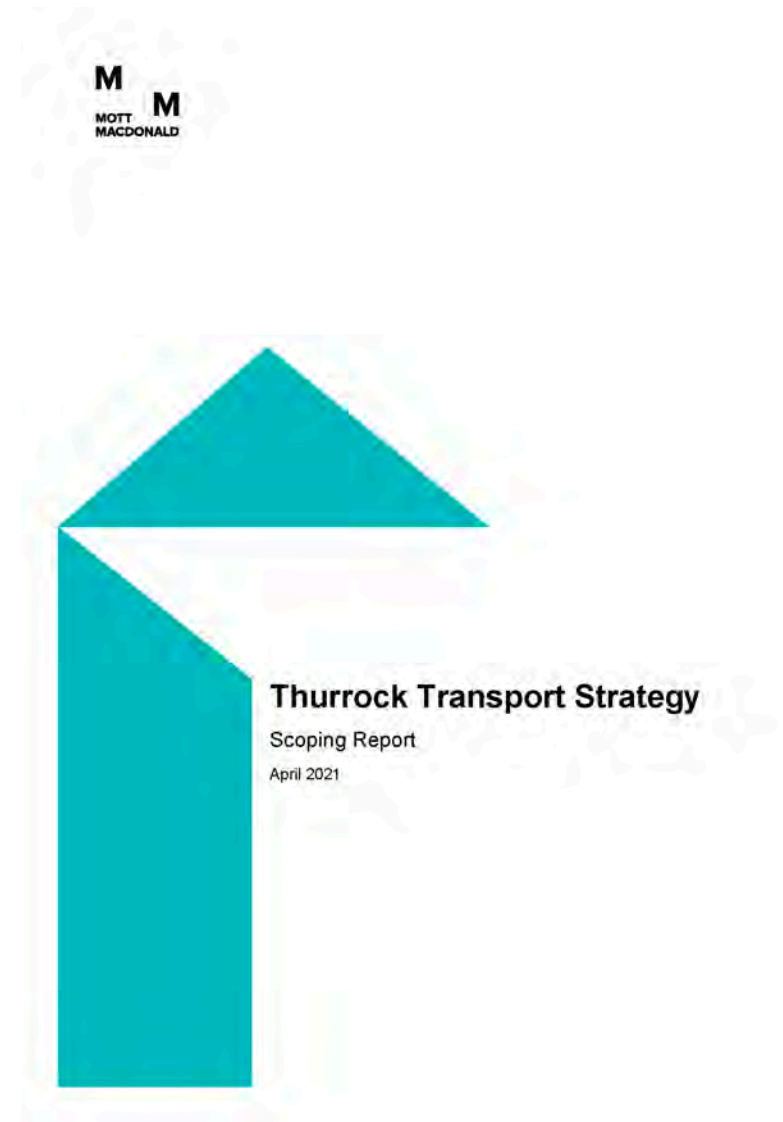
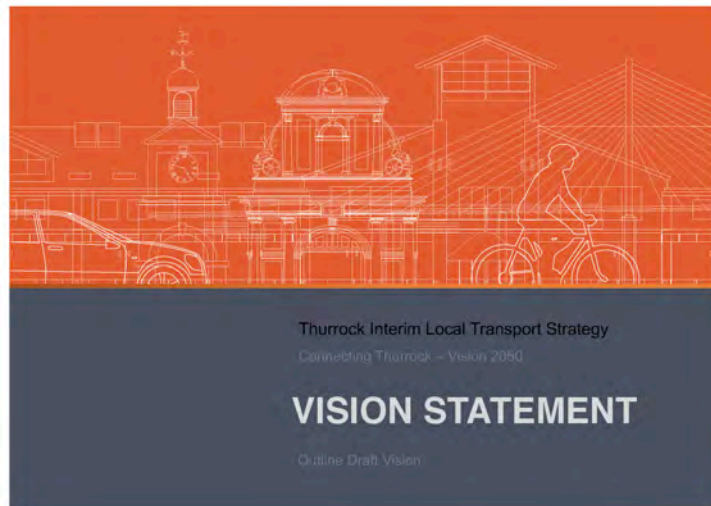
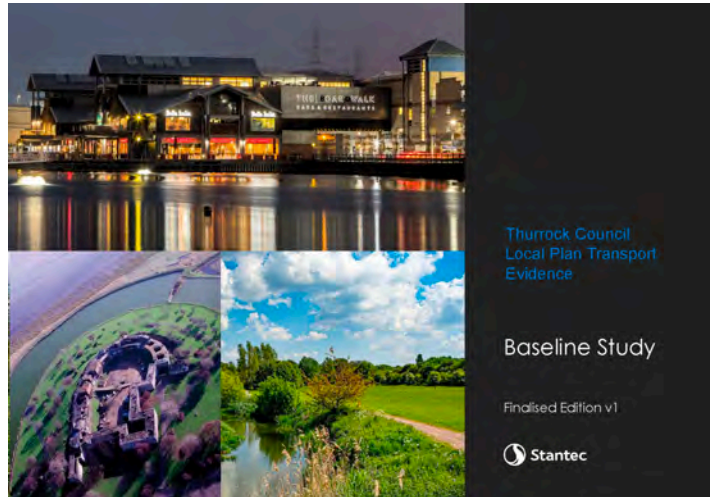


Thurrock Transport Strategy



Thurrock Interim Transport Strategy

Work to date



Key Studies and Technical Work

- Transport Baseline Study and Vision for Movement – Draft Versions
- Thurrock Interim Transport Strategy, 2021/22 to 2039/40 - Completed as Draft
- Preliminary Appraisal of Growth Options – Technical work underway
- Parking Strategy & Standards – Completed, not yet approved.
- Growth Area Transport Access Studies – Started with focus in New Year (local area transport models)
- Site Transport Connectivity Assessments – Start in New Year
- Bus Strategy (Building on Bus Services Improvement Plan) – Start in New Year
- Local Cycling and Walking Implementation Plan (LCWIP) – Underway
- Mass Rapid Transit corridor and modes study – Not yet started
- AQ Assessment and Model – Not yet started
- Thurrock Freight Strategy and HGV Parking Study – Not yet started
- Thurrock Local Transport Strategy, 2022/23 to 2039/2040 – Started as Interim (With Thurrock Strategic Transport Model – due to be procured in New Year)

Vision and Priorities for Thurrock

An ambitious and collaborative community that is proud of its heritage and excited by its diverse opportunities and future.

Priorities

Three priorities define the vision:

People – a Borough where people of all ages are proud to work and play, live, and stay.

Place – a heritage-rich Borough that is ambitious for its future.

Prosperity – a Borough that enables everyone to achieve their aspirations.



Figure 3 Thurrock vision and priorities

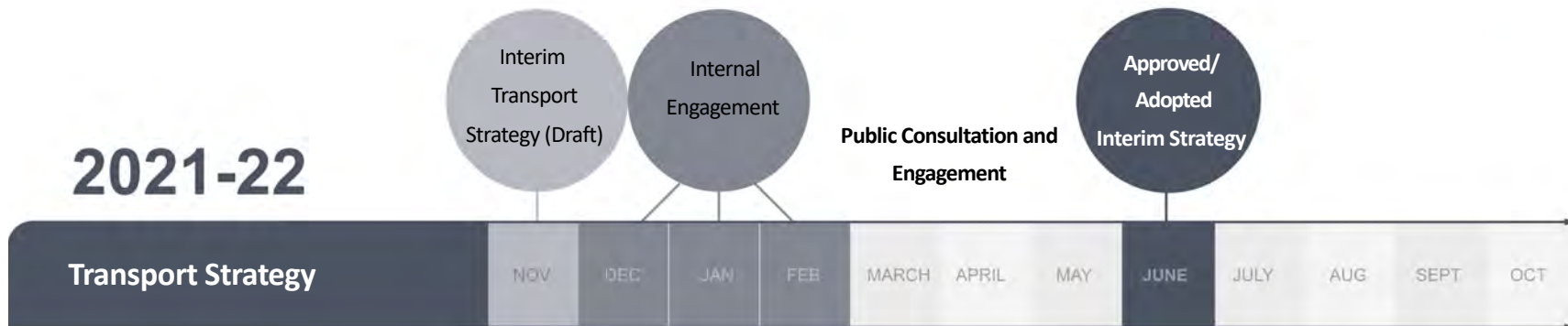
Process & Timescale

(Draft for discussion)

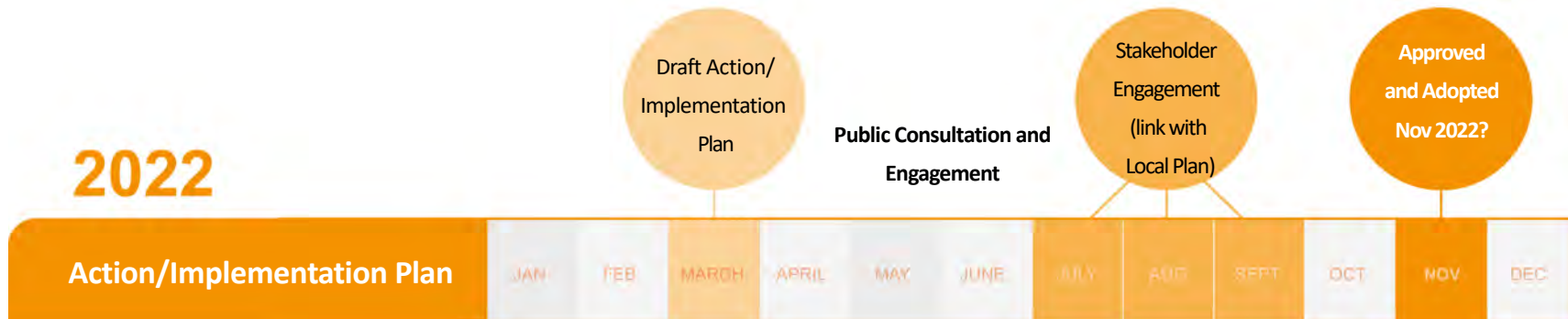
2021



2021-22

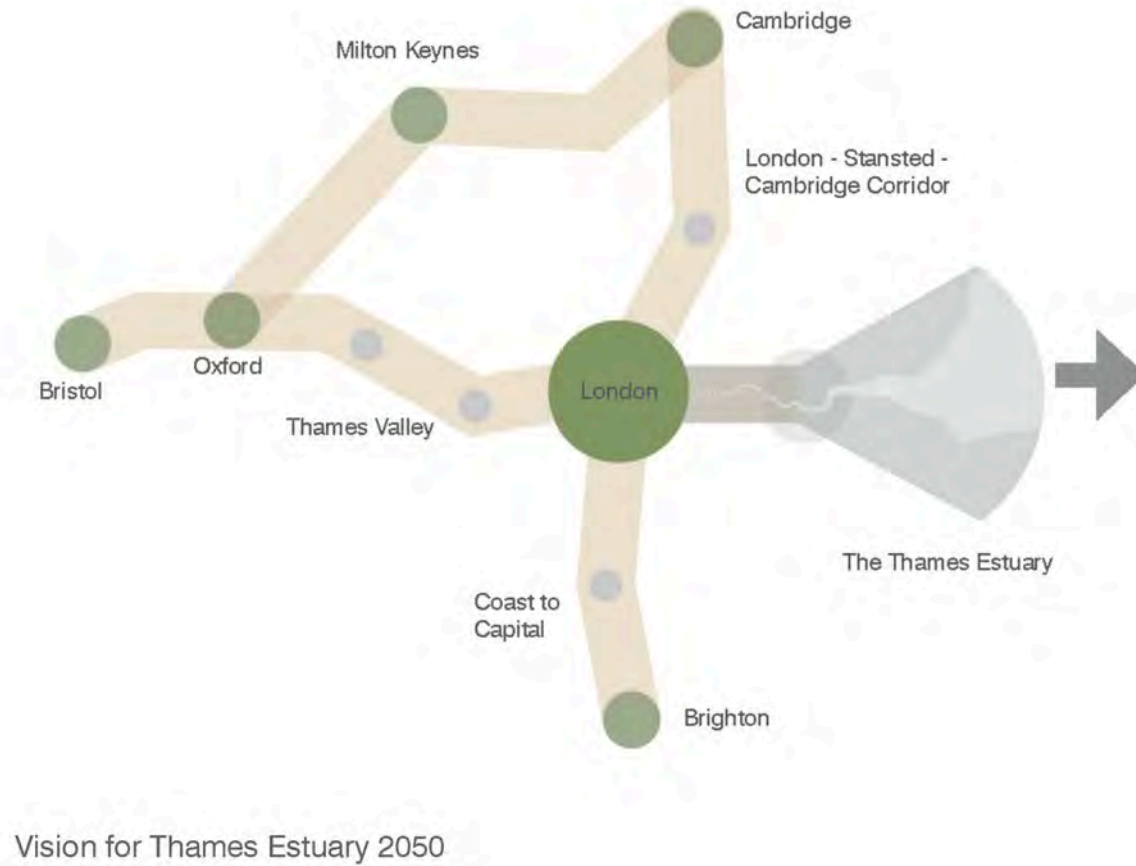


2022



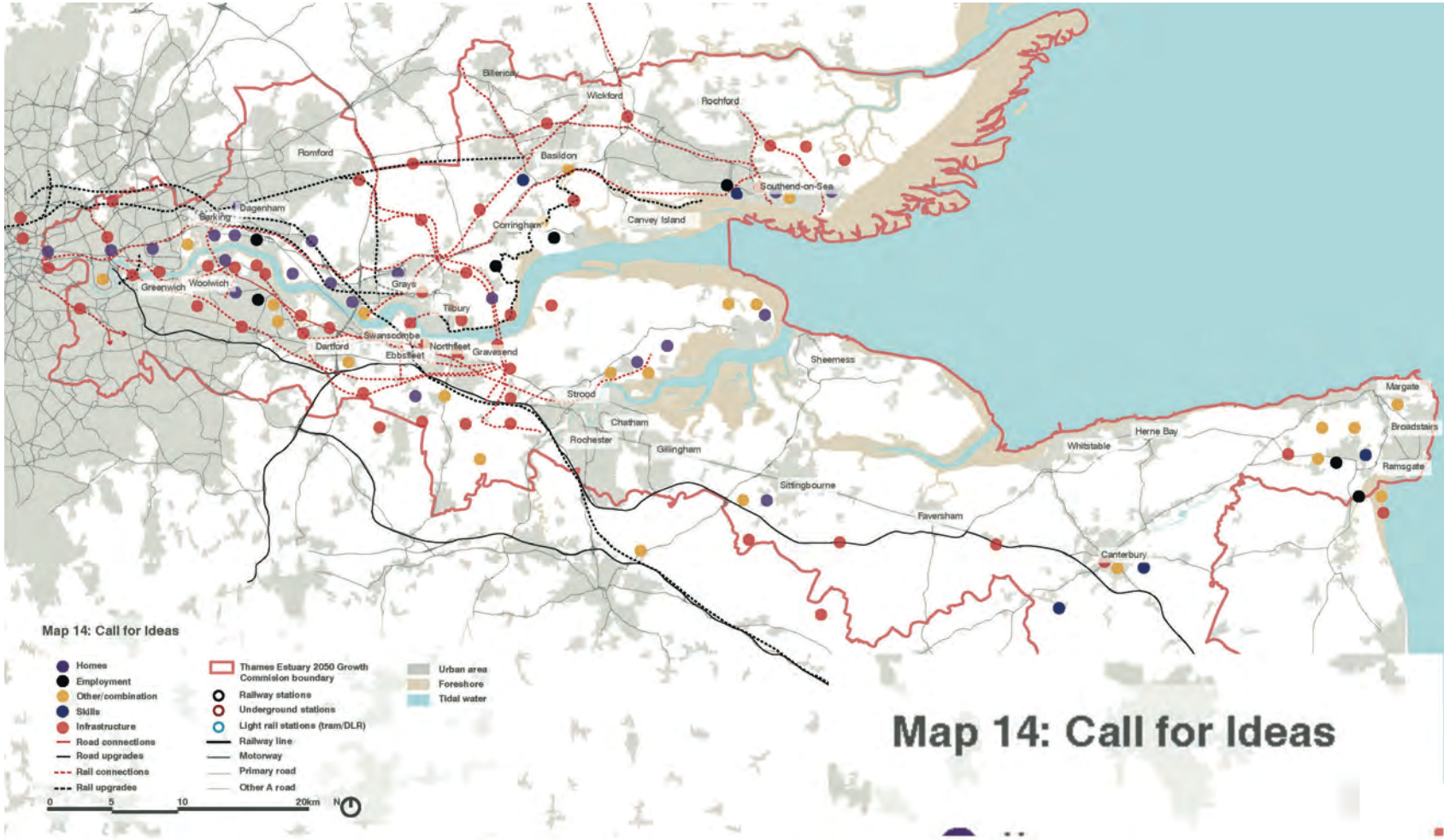
Thames Estuary 2050 Growth Commission

Where does Thurrock fit within a wider growth and regeneration strategy?



Five Productive Places

Thames Estuary 2050 Growth Commission



Map 14: Call for Ideas

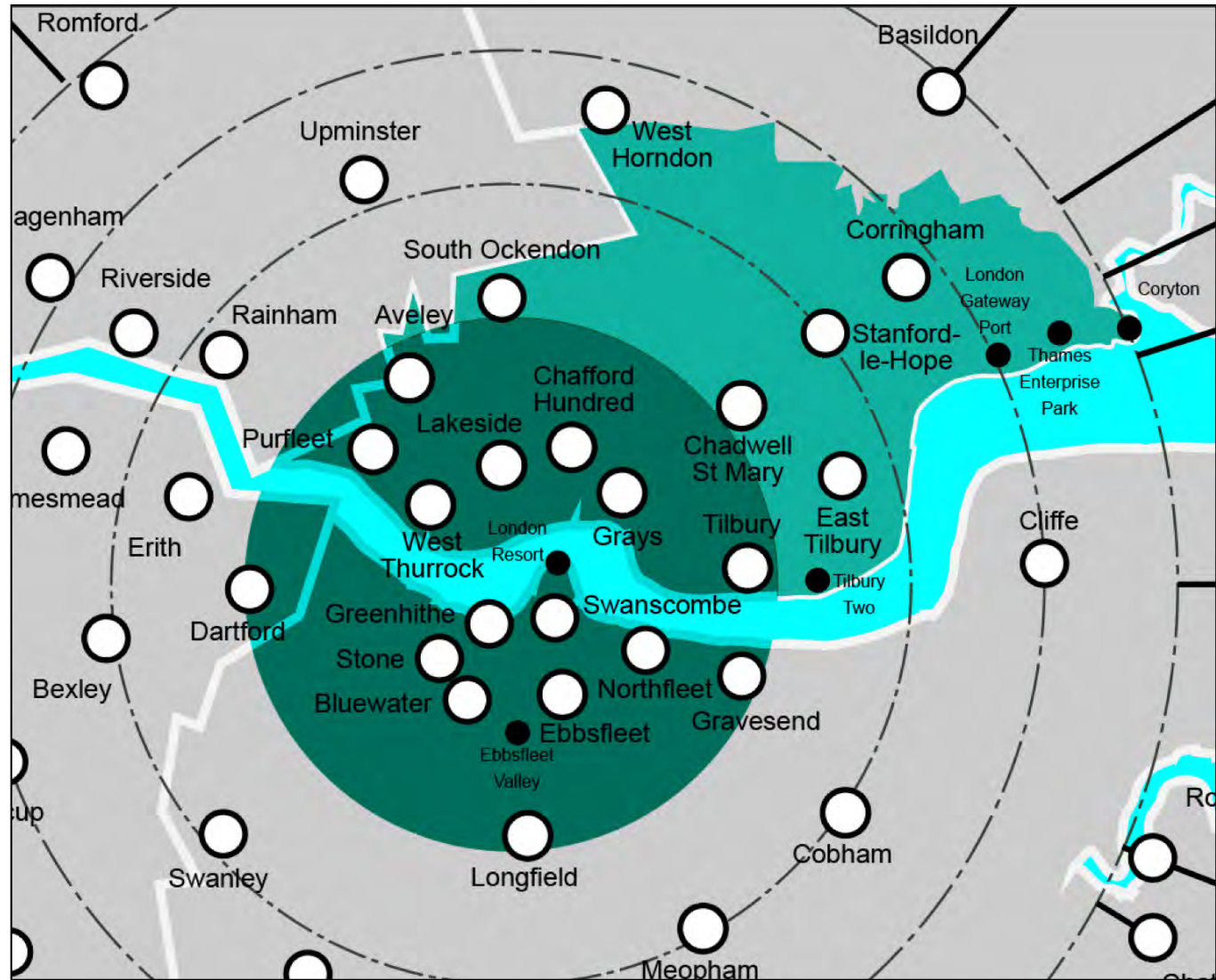
Urban Area Wide – Approach

City region: Grays, Tilbury, Gravesend and Dartford.

National Transport and Major Developments

Local regeneration and growth.

Highly connected town and local centres, with new housing and jobs.



Wider Partnerships

Where does Thurrock fit within a wider growth and regeneration strategy?



Vision & Goals

Statements

Goals

Strategic
Focus Areas

Vision 2050 Diagram(s).

VISION -GOALS

Goal 1: An accessible and inclusive network - a transport network that is accessible for all.



Goal 2: Reducing emissions and improving air quality- reducing all transport emissions including CO2, nitrous oxide, noise and particulates.



Goal 3: Climate change resilience and responsibility - a transport network resilient and adaptive to climate change effects whilst minimising climate change impacts.

Goal 4: Health and wellbeing - promoting good physical and mental health and community well-being.



Goal 5: Active travel choices- encouraging more people to walk and cycle.



Goal 6: Modal shift to public transport- a significant shift from private car use to public transport for most journeys.

Goal 7: Safer roads - a feeling of safety and security for all transport network users with no deaths and fewer accidents.



Goal 8: Facilitating development, growth and regeneration -Transport infrastructure investment to facilitate growth and regeneration.

Goal 9: Sustainable Development - coordinating land use and transport planning in order to avoid, minimise and mitigate negative economic, social, environmental and climate impacts.



Goal 10: Managing and maintaining - A well-managed and well-maintained network that is reliable giving people confidence in journey times.



Nine Strategic Focus Areas

Regional Priorities?

Major transport investment for River Thames Connectivity

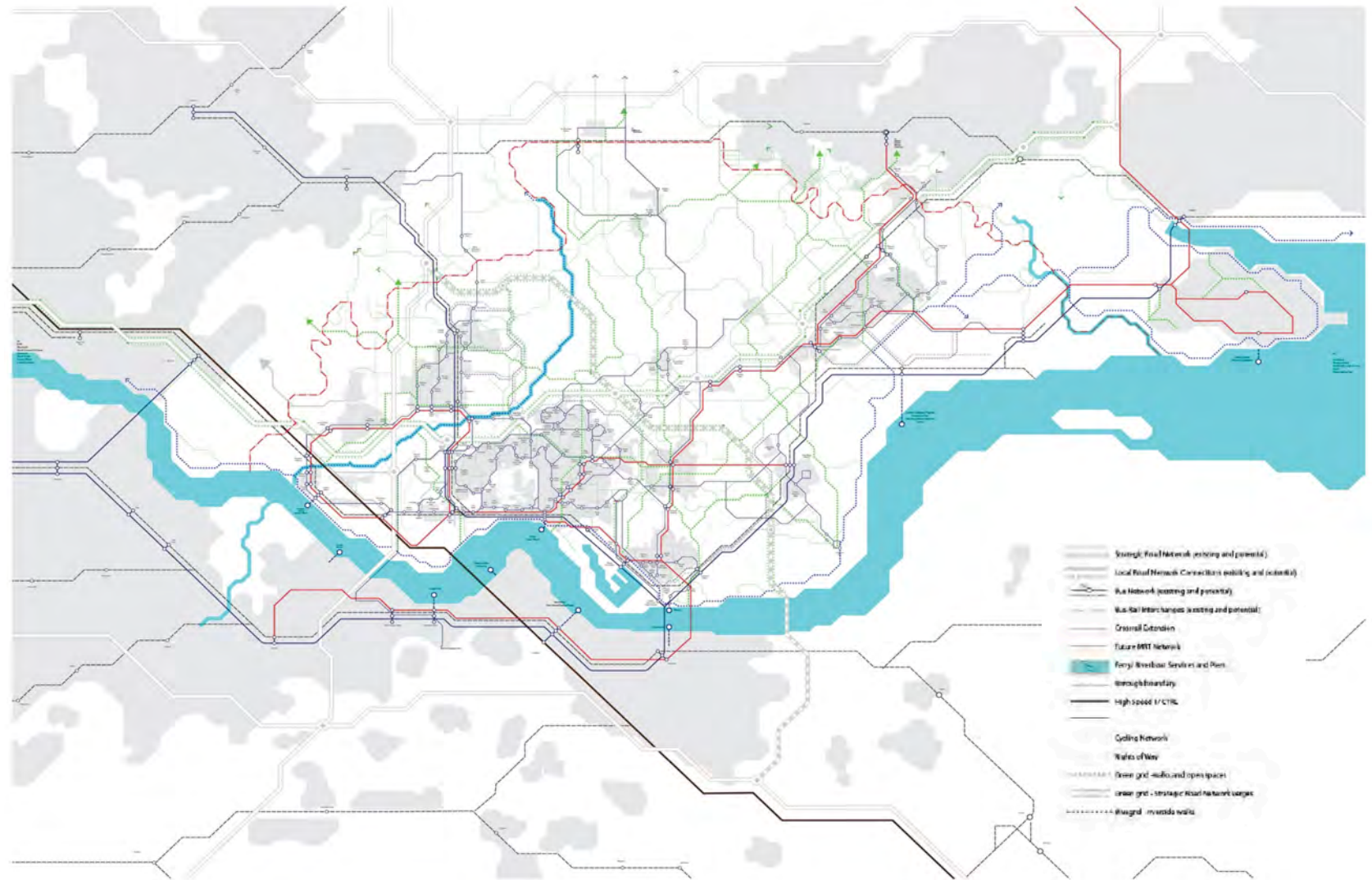
Sub-regional rail enhancements, alongside review of National Road priorities and proposals

Promote and develop Mass Rapid Transit (MRT) system for Thurrock, South Essex and North Kent.



Scale. Vision. Time.

What are the emerging regeneration and growth opportunities across Thurrock?



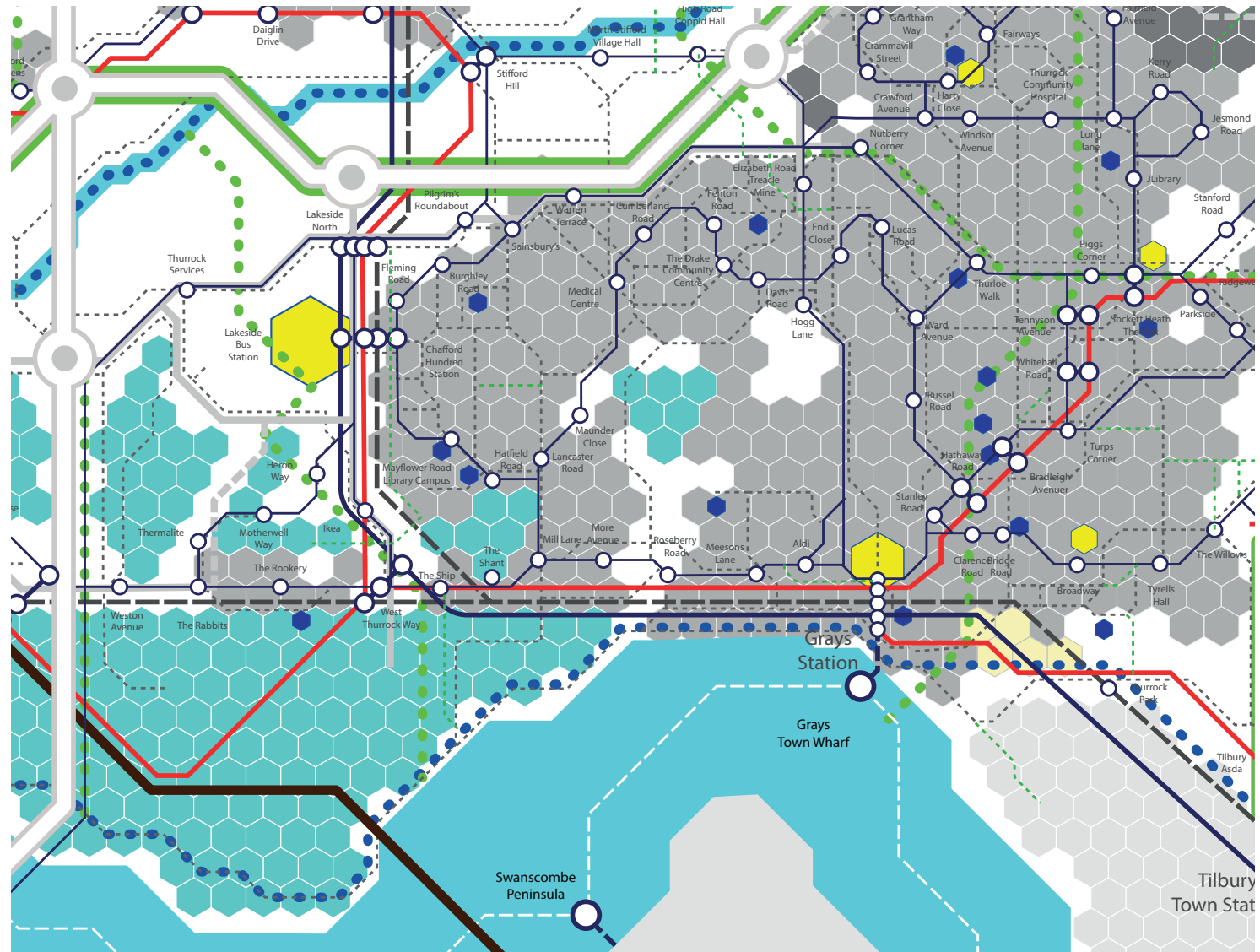
Vision 2050 Diagram (To be updated)

The vision diagram illustrates an idealised transport network for Thurrock in the year 2050.

Transport Vision Diagram (Abstract)

Scale. Vision. Time.

How can transport investment and new infrastructure drive economic growth to create and sustain local jobs?



Illustrative concepts for growth area transport strategies

Multi-modal & Mode Shift

Preliminary
Transport
Appraisal of
Growth
Options

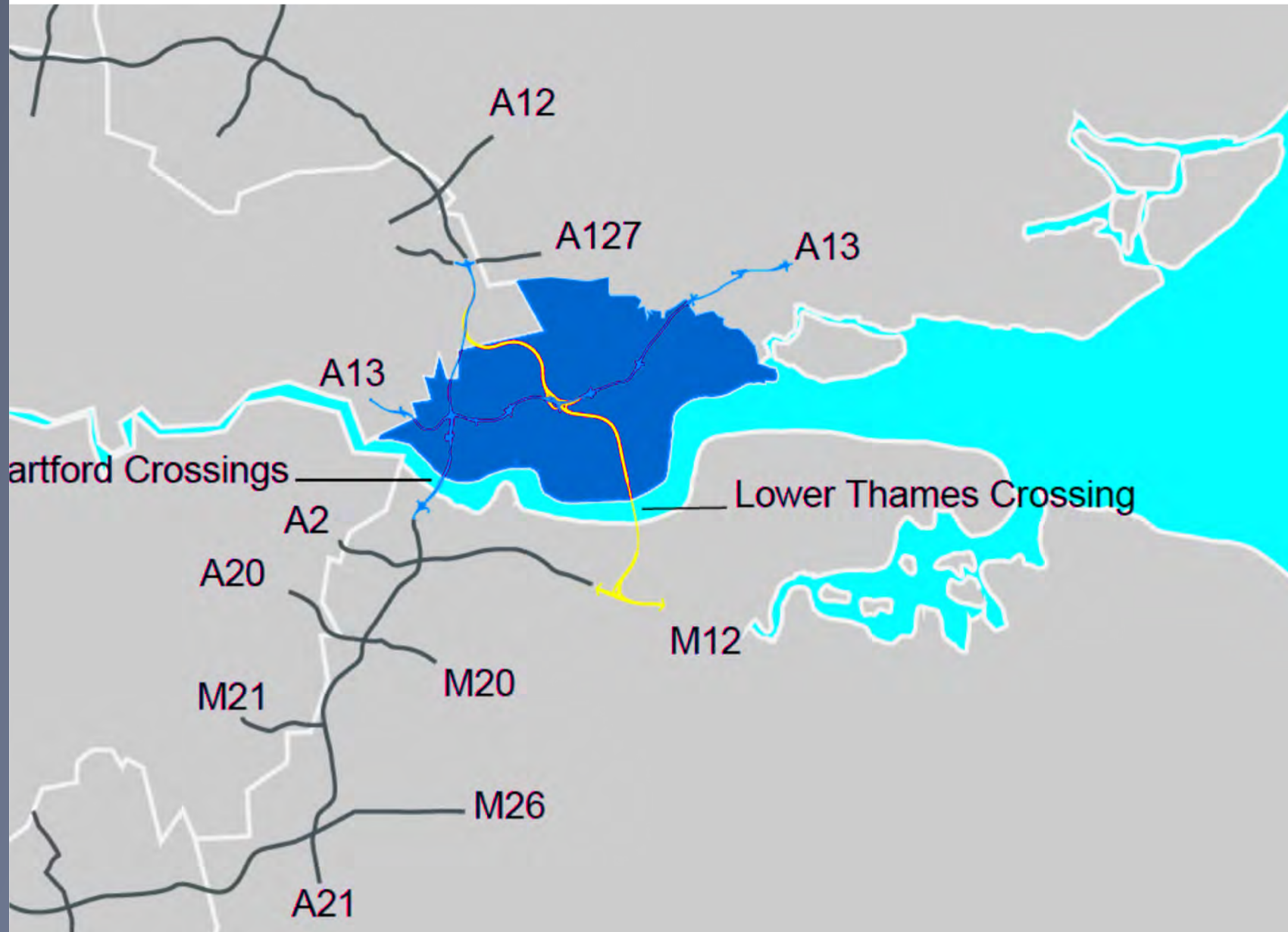


Lower Thames Crossing

How to lock in local benefits from Lower Thames Crossing?

Does this sub-region need a sub-regional public transport strategy?

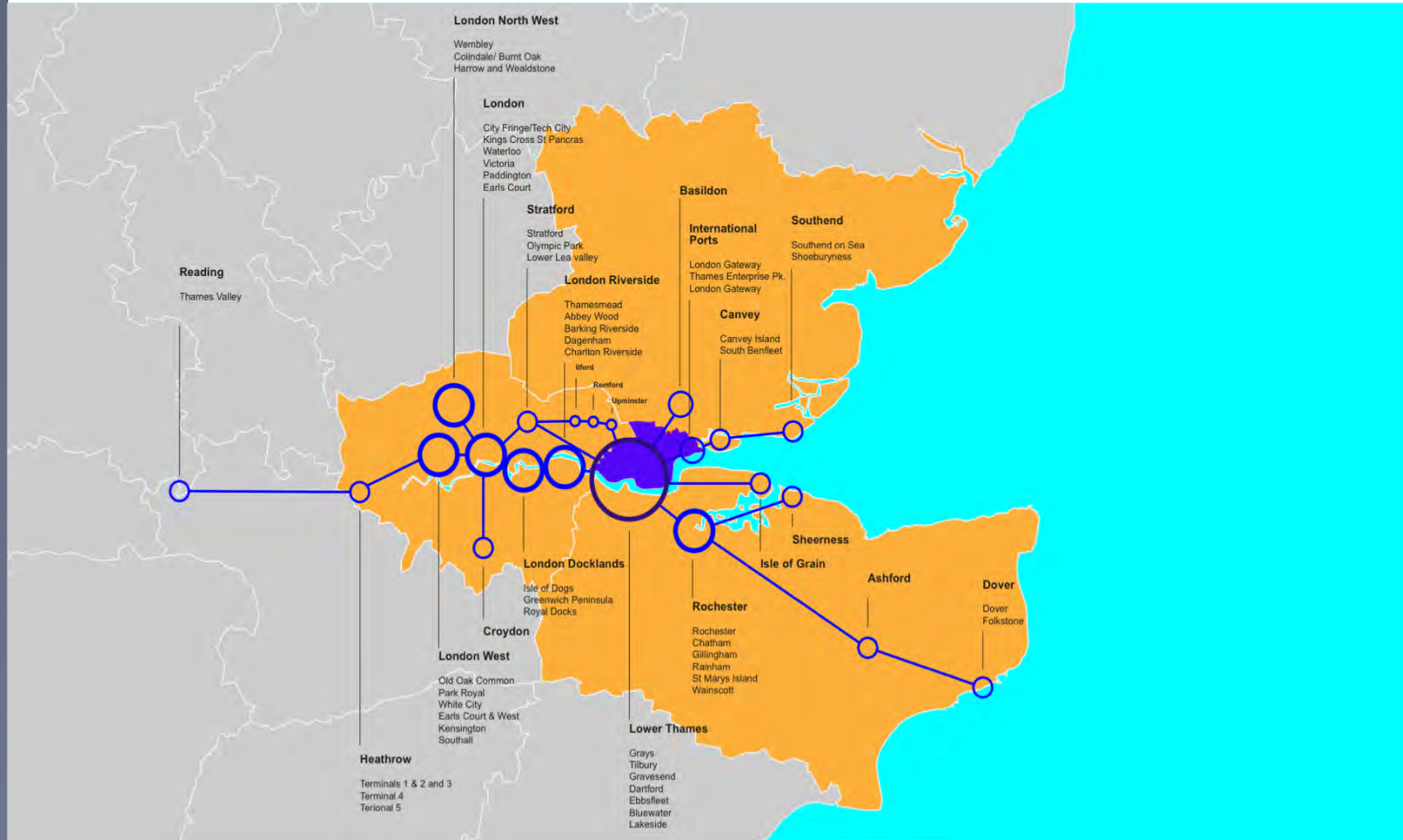
A solution as equally ambitious as these national road proposals?



Regeneration and Growth

What does an integrated transport strategy coordinated across all three counties look like?

How should Thurrock make connections at a strategic level?



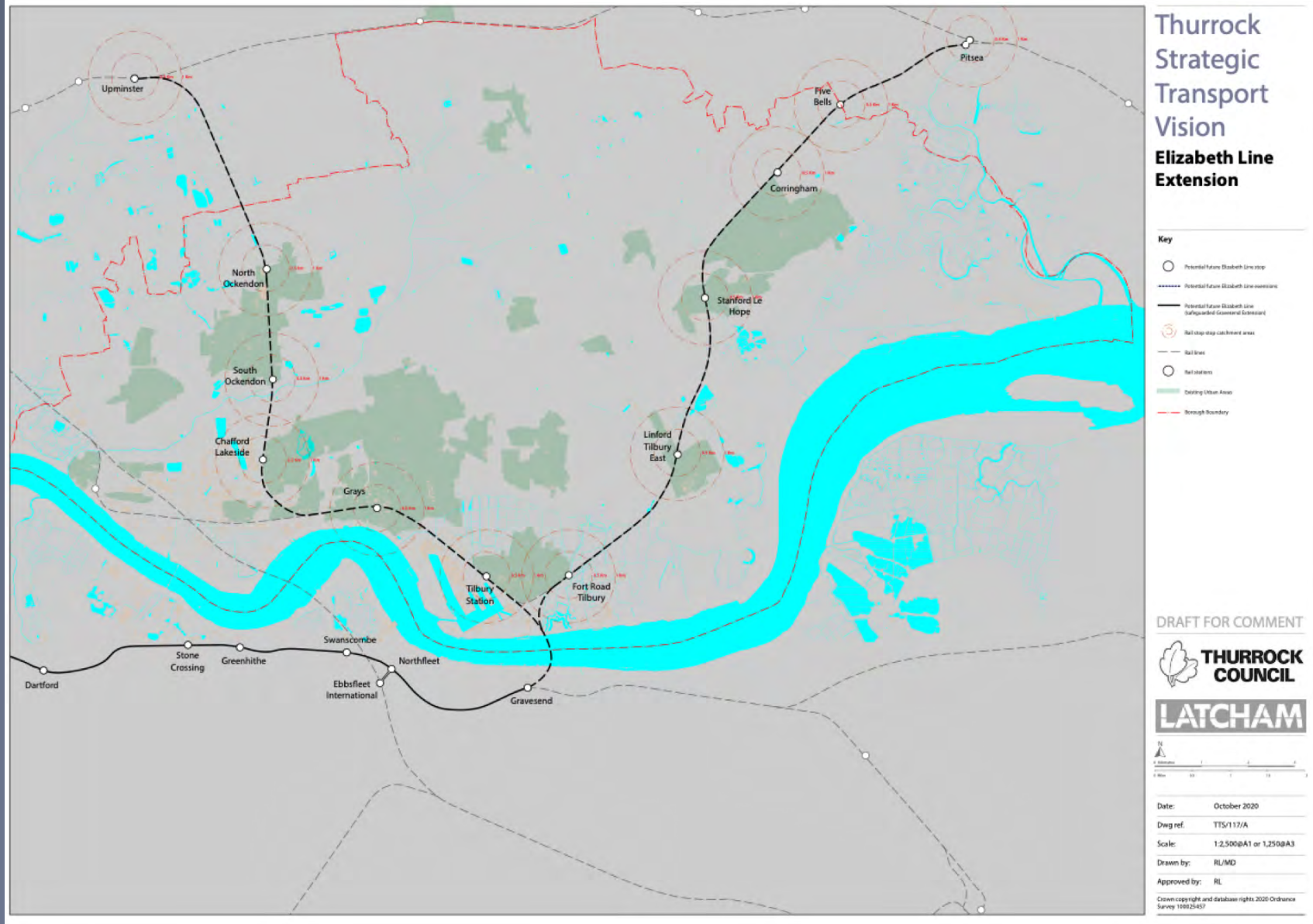
Sub-regional Rail

Extending Crossrail lines to Thurrock.

Go south via Woolwich and Abbey Wood to Tilbury and Grays.

Go north via Angel, Stratford to Grays and Tilbury.

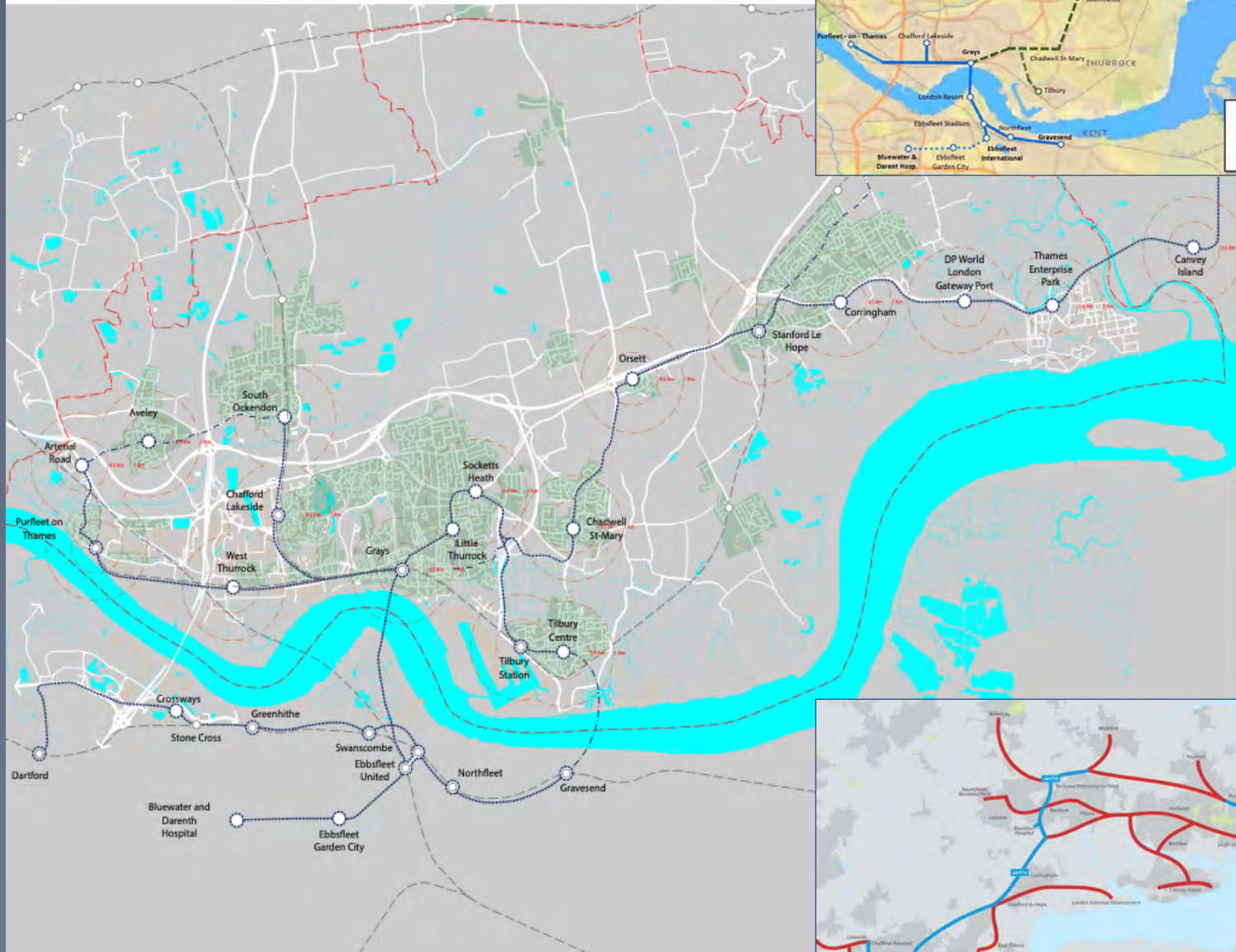
Should it be both?



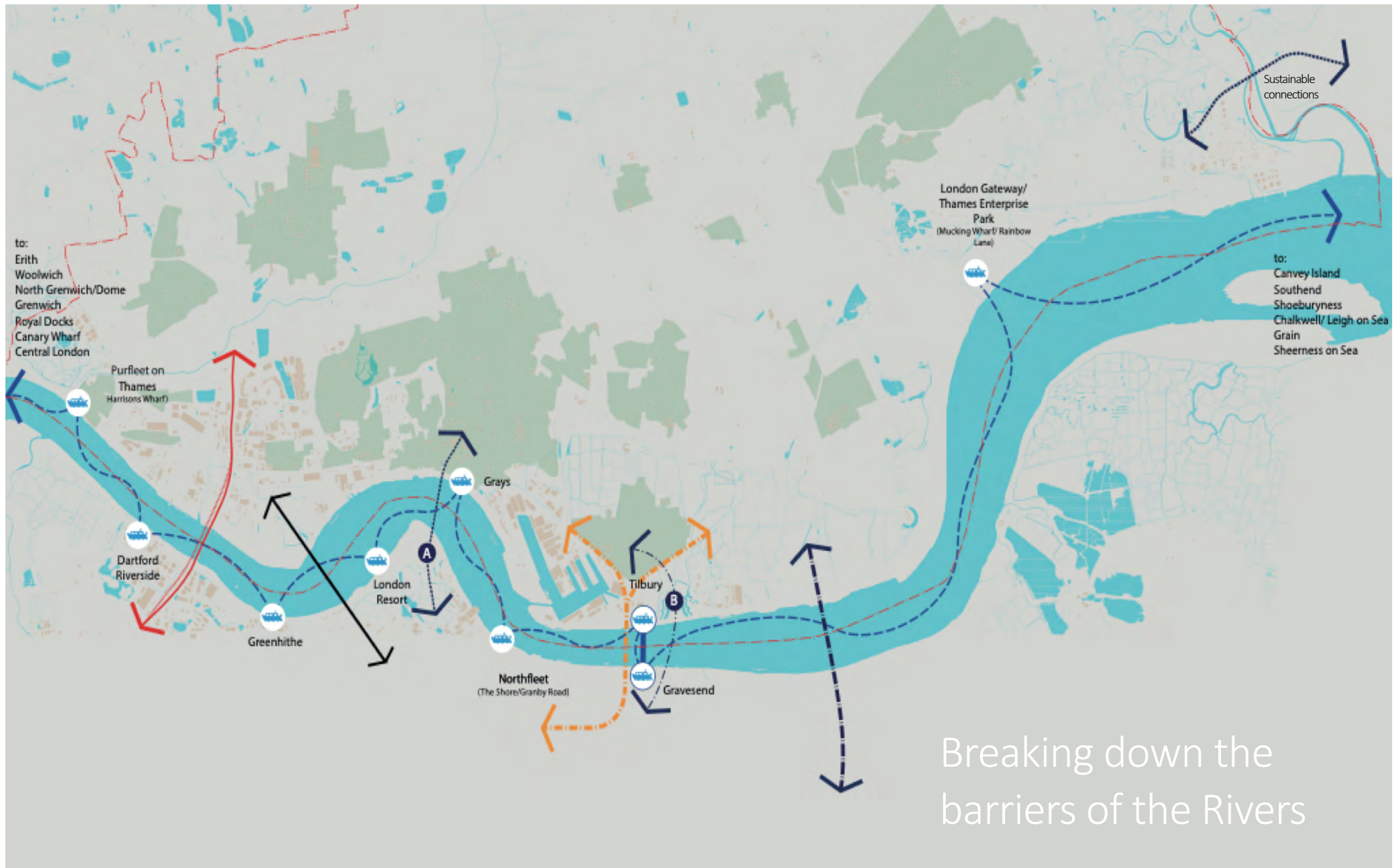
Mass Transit Network (MRT) System

A new mass transit network for Thurrock and North Kent.

Are existing proposals (i.e. Kenex) sufficiently ambitious and will they serve Thurrock's future plans for growth?



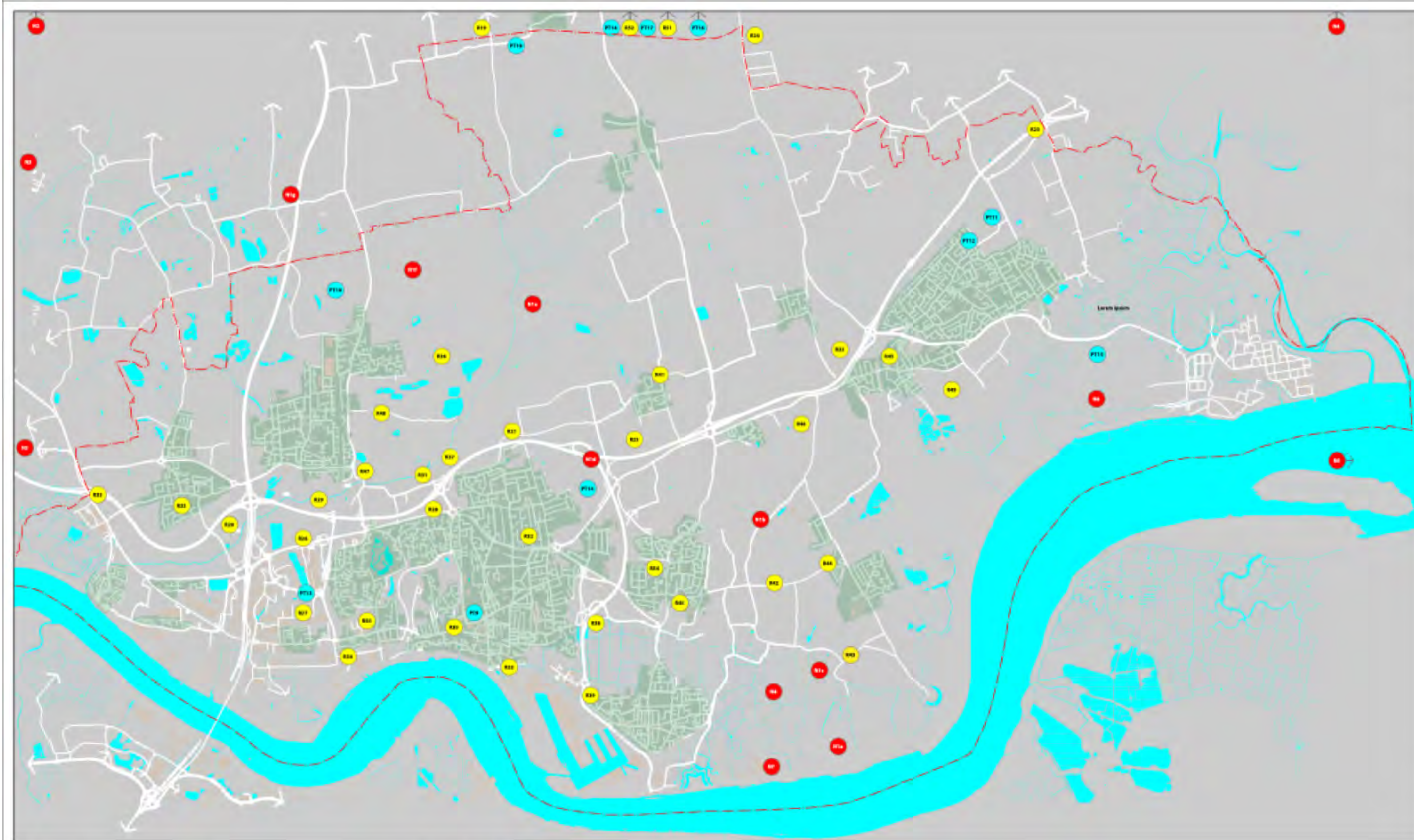
Corridors. Systems. Interchange.



Multi-modal Roads

Where are the priority transport infrastructure proposals?

Which infrastructure projects should be defined as 'core' schemes



Thurrock Strategic Transport Vision Project Sieve Mapping

- Key**
- National Transport Projects
 - Thurrock Transport Projects
 - Active Travel and Integrated Public Transport Projects
 - Road Other Projects
 - Existing Urban Area
 - Borough Boundary

NATIONAL TRANSPORT PROJECTS		THURROCK LOCAL TRANSPORT PROJECTS	
Road		Active Travel and Integrated Public Transport Projects	Road Other Projects
N1	Lower Thames Crossing (LTC)	PT9	South Essex Rapid Transit Scheme/ Rapid Connectivity System
N1a	LTC Tunnel Portal	PT10	South Ockendon Growth and Connectivity
N1b	LTC Tunnel Portal to A13 Link Road	PT11	Contingham parkway rail provision
N1c	LTC Tibbury Link Road Junction	PT12	Contingham access package
N1d	LTC A13 Junction	PT13	8186 West Thurrock Way
N1e	LTC A13 to M25 Link Road	PT14	A1069 Slip Near 1225 - New Bus/Cycle Link
N1f	LTC South Ockendon Universal Road Junction	PT15	Sustainable Access to London Gateway and Surrounding Area
N1g	LTC/M25 Junction	PT16	Public Transport Link Between London Railway Station and Dunton Hills Garden Village and West of Basildon
N2	London Fenchurch Street - Line Improvements	PT17	Dunton Garden Village Enabling Public transport infrastructure
N3	London Liverpool Street - Line Improvements	PT18	West Horndon New Transport Interchange
N4	Elizabeth Line Future Extension to Southend Victoria		
N5	New Thames Railway Crossing Thames to the West of Southend		
N6	London Gateway (DP World) Expansion		
N7	Tibbury 2		
N8	Tibbury Link Road		
R19	A127 Growth Corridor improvements, Thames (SouthEast)	R19	A127 Growth Corridor improvements, Thames (SouthEast)
R20	M25 J30/31 Long Term Improvements	R20	M25 J30/31 Long Term Improvements
R21	A13 Route Based Strategy Improvements	R21	A13 Route Based Strategy Improvements
R22	Widening of A13 Between A128 and A1014	R22	Widening of A13 Between A128 and A1014
R23	A13 Five Belts to Pitsea Route Improvement	R23	A13 Five Belts to Pitsea Route Improvement
R24	Dunton Link Road	R24	Dunton Link Road
R25	A13 Adaptation	R25	A13 Adaptation
R26	A1306 Arterial Road Widening	R26	A1306 Arterial Road Widening
R27	A1306 London Road Widening	R27	A1306 London Road Widening
R28	A1306 capacity enhancements	R28	A1306 capacity enhancements
R29	A13/A128 east facing slips	R29	A13/A128 east facing slips
R30	Thurrock Rail Study	R30	Thurrock Rail Study
R31	A13 new junction	R31	A13 new junction
R32	A1013 Lodge lane capacity imps	R32	A1013 Lodge lane capacity imps
R33	Slip Lane, Avelay	R33	Slip Lane, Avelay
R34	West Thurrock Marshes Relief Rd (Phase 2)	R34	West Thurrock Marshes Relief Rd (Phase 2)
R35	Wernington Interchange	R35	Wernington Interchange
R36	South Ockendon Relief Road	R36	South Ockendon Relief Road
R37	Stifford interchange	R37	Stifford interchange
R38	A1069 Marshfoot Rd junction imps	R38	A1069 Marshfoot Rd junction imps
R39	A1069 Asda roundabout junction imps	R39	A1069 Asda roundabout junction imps
R40	Cross Keys Junction improvements	R40	Cross Keys Junction improvements
R41	A128 Safety & Capacity Scheme	R41	A128 Safety & Capacity Scheme
R42	Linford bypass	R42	Linford bypass
R43	Tibbury link road (and supporting infrastructure)	R43	Tibbury link road (and supporting infrastructure)
R44	East Tibury eastern bypass and rail crossing	R44	East Tibury eastern bypass and rail crossing
R45	Stanford le Hope town centre access improvements	R45	Stanford le Hope town centre access improvements
R46	East Tibury northern bypass	R46	East Tibury northern bypass
R47	Ford place junction imps	R47	Ford place junction imps
R48	Buckles lane upgrade	R48	Buckles lane upgrade
R49	Stanford le Hope southern access	R49	Stanford le Hope southern access
R50	London Rd, South Stifford	R50	London Rd, South Stifford
R51	A127 / A128 Brentwood Road / A128 Tibbury Road junction 2 / A128 - Tibury Road / Station Road	R51	A127 / A128 Brentwood Road / A128 Tibury Road junction 2 / A128 - Tibury Road / Station Road
R52	Manor Way Upgrade	R52	Manor Way Upgrade
R53	Chadwell St Mary's Link Road	R53	Chadwell St Mary's Link Road
R54		R54	

DRAFT FOR COMMENT

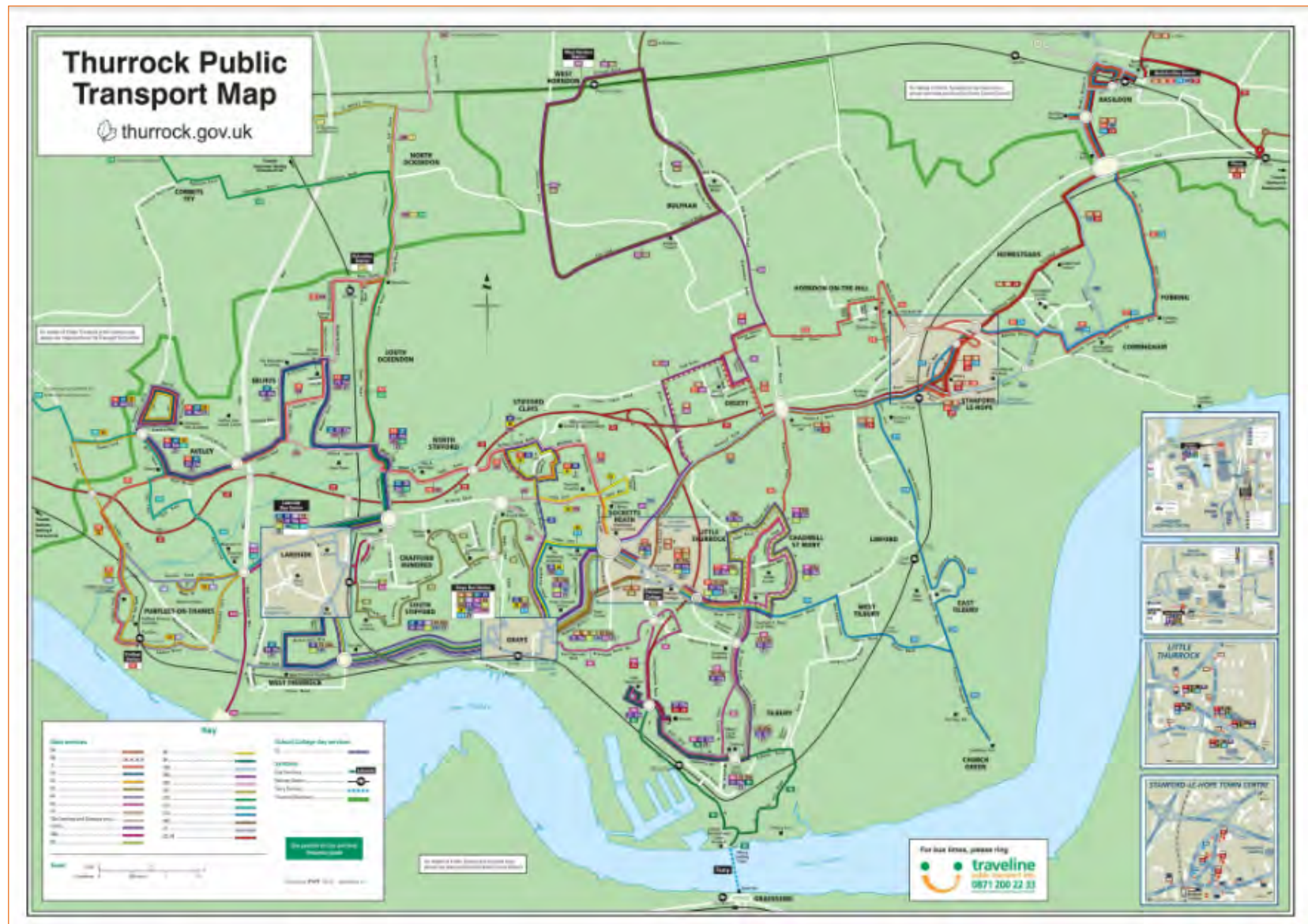


Date: October 2020
 Dwg ref: TTS/110/A
 Scale: 1:2,500@A1 or 1:250@A3
 Drawn by: RL/MD
 Approved by: RL
 Crown copyright and database rights 2020 Ordnance Survey 100024317

Bus Strategy

Now: Bus Service Improvement Plan

Future: Could better bus and bus-based rapid transit be the foundation of Thurrock's future public transport strategy?

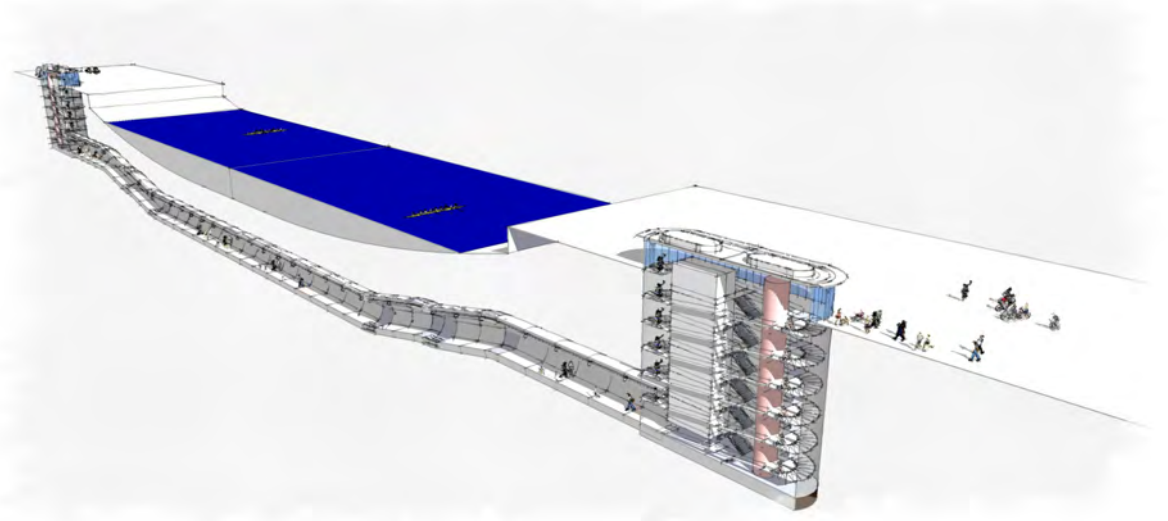


Walking and Cycling

Local Walking and
Cycling
Improvement Plans
(LCWIP)

How can new
routes and an
improved network
better connect
people to jobs,
local centres and
open spaces?

**Little
and Large**



Human Scale

Questions and Discussion



LATCHAM

DOYLE